

Plate 7
Moths IV

- A: *Calliteara queenslandica* (Lepidoptera: Lymantriidae)
B: *Lymantria rosa* ♀ (Lepidoptera: Lymantriidae)
C: *Lymantria novaguinensis* ♀ (Lepidoptera: Lymantriidae)
- D: *Lymantria ninayi* ♀ (Lepidoptera: Lymantriidae)
E: *Lymantria ninayi* ♂ (Lepidoptera: Lymantriidae)
F: Young ♂ caterpillar of *Lymantria ninayi* (Lepidoptera: Lymantriidae)
G: Older ♀ caterpillar of *Lymantria ninayi* (Lepidoptera: Lymantriidae)
- H: *Fodina* sp. (Lepidoptera: Noctuidae)
I: *Serrodes* sp. (Lepidoptera: Noctuidae)
J: Underwing moth (Lepidoptera: Noctuidae)
- K: Underwing moth (Lepidoptera: Noctuidae)
L: *Calogramma* sp. (Lepidoptera: Noctuidae)
M: *Spirama revolvens* (Lepidoptera: Noctuidae)
- N: *Ophiusa* sp. (Lepidoptera: Noctuidae)
O: *Erebus* sp. (Lepidoptera: Noctuidae)
P: *Ophiusa* sp. (Lepidoptera: Noctuidae)
Q: Underwing moth (Lepidoptera: Noctuidae)
- R: *Hulodes* sp. (Lepidoptera: Noctuidae)
S: *Cyclodes* sp. (Lepidoptera: Noctuidae)
T: *Anomis* sp. (Lepidoptera: Noctuidae)

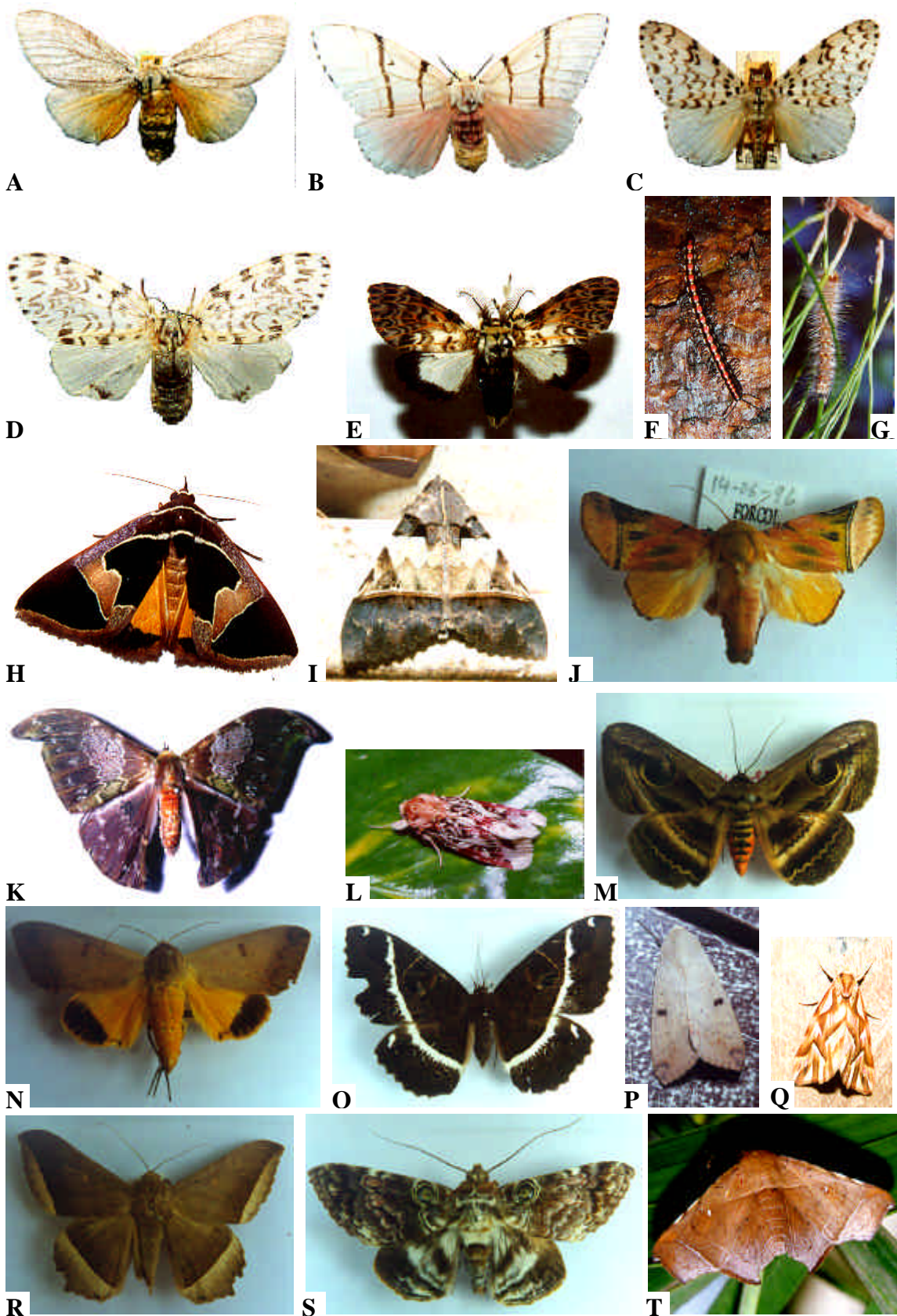


Plate 7

Plate 8
Moths V, Butterflies I

- A: *Goniophila sp.* (Lepidoptera: Noctuidae)
- B: Giant Fruit-Sucking Moth *Phyllodes imperialis* (Lepidoptera: Noctuidae)
- C: Underwing moth (Lepidoptera: Noctuidae)

- D: *Othreis sp.* (Lepidoptera: Noctuidae)
- E: Cut worm caterpillar (Lepidoptera: Noctuidae)

- F: Nectar feeders on *Eucalyptus deglupta*: *Yoma algina* (Lepidoptera: Nymphalidae: Nymphalinae) in centre and several flies in right upper corner
- G: Nectar feeders on *Eucalyptus deglupta*: two *Hypolimnas bolina* ♀ (Lepidoptera: Nymphalidae: Nymphalinae) at top, *Danaus chrysippus* (Lepidoptera: Nymphalidae: Danainae) at bottom left, a heteropteran bug (right bottom corner), a Lycaenidae butterfly (right), several flies and wasps, *Euploea sp.* (Lepidoptera: Nymphalidae: Danainae) and *Yoma algina* (Lepidoptera: Nymphalidae: Nymphalinae) at right background

- H: *Graphium eurypylus* upperside (Lepidoptera: Papilionidae: Papilioninae)
- I: *Graphium weiskei* upperside (Lepidoptera: Papilionidae: Papilioninae)
- J: *Papilio ulysses telemachus* ♀ upperside (Lepidoptera: Papilionidae: Papilioninae)
- K: *Papilio ulysses telemachus* ♂ upperside (Lepidoptera: Papilionidae: Papilioninae)

- L: *Papilio euchenor* ♀ upperside (Lepidoptera: Papilionidae: Papilioninae)
- M: *Papilio aegaeus* ♂ upperside (Lepidoptera: Papilionidae: Papilioninae)
- N: *Papilio aegaeus* form *amanga* ♀ upperside (Lepidoptera: Papilionidae: Papilioninae)
- O: *Papilio woodfordi* ♂ upperside (Lepidoptera: Papilionidae: Papilioninae)



A



B



C



D



E



F



G



H



I



J



K



L



M



N



O

Plate 8

Plate 9
Butterflies II: Birdwings

- A: *Ornithoptera alexandrae* ♀ underside (Lepidoptera: Papilionidae)
B: *Ornithoptera chimaera* ♀ upperside (Lepidoptera: Papilionidae)
C: *Ornithoptera goliath* ♀ upperside (Lepidoptera: Papilionidae)
- D: *Ornithoptera meridionalis* ♀ underside (Lepidoptera: Papilionidae)
E: *Ornithoptera paradisea* ♀ upperside (Lepidoptera: Papilionidae)
F: *Ornithoptera priamus poseidon* ♀ upperside (Lepidoptera: Papilionidae)
- G: *Ornithoptera victoriae* ♀ underside (Lepidoptera: Papilionidae)
H: *Ornithoptera alexandrae* ♂ underside (Lepidoptera: Papilionidae)
I: *Ornithoptera chimaera* ♂ underside (Lepidoptera: Papilionidae)
- J: *Ornithoptera goliath* ♂ upperside (Lepidoptera: Papilionidae)
K: *Ornithoptera meridionalis* ♂ upperside (Lepidoptera: Papilionidae)
L: *Ornithoptera paradisea* ♂ upperside (Lepidoptera: Papilionidae)
- M: *Ornithoptera priamus poseidon* ♂ upperside (Lepidoptera: Papilionidae)
N: *Ornithoptera priamus urvillanus* ♂ upperside (Lepidoptera: Papilionidae)
O: *Ornithoptera victoriae* ♂ upperside (Lepidoptera: Papilionidae)
- P: *Ornithoptera* sp. x *Triodes oblongomaculatus* hybrid, upperside (Lepidoptera: Papilionidae)
Q: *Troides oblongomaculatus* upperside (Lepidoptera: Papilionidae)
R: *Troides oblongomaculatus* pupating last larval instar (Lepidoptera: Papilionidae)
S: *Troides oblongomaculatus* girdle pupa (Lepidoptera: Papilionidae)



A



B



C



D



E



F



G



H



I



J



K



L



M



N



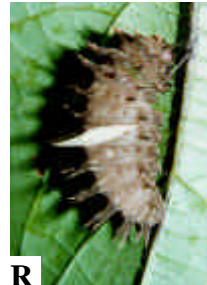
O



P



Q



R



S

Plate 9

Plate 10
Butterflies III

- A: *Atrophaneura polydorus aigananus* (= *Pachliopta polydorus aigananus*) upperside (Lepidoptera: Papilionidae)
- B: *Catopsilia pomona* ♀ upperside (Lepidoptera: Pieridae: Coliadinae)
- C: *Catopsilia pomona* ♂ upperside (Lepidoptera: Pieridae: Coliadinae)
- D: *Delias mira* underside (Lepidoptera: Pieridae: Pierinae)
- E: *Delias nocharis* underside (Lepidoptera: Pieridae: Pierinae)
- F: *Delias hallstromi* underside (Lepidoptera: Pieridae: Pierinae)
- G: *Delias ladas* underside (Lepidoptera: Pieridae: Pierinae)
- H: *Delias iltis* underside (Lepidoptera: Pieridae: Pierinae)
- I: *Delias abnormis* underside (Lepidoptera: Pieridae: Pierinae)
- J: *Delias perimale* upperside (Lepidoptera: Pieridae: Pierinae)
- K: *Delias perimale* underside (Lepidoptera: Pieridae: Pierinae)
- L: *Delias meeki* underside (Lepidoptera: Pieridae: Pierinae)
- M: *Delias leucias* underside (Lepidoptera: Pieridae: Pierinae)
- N: *Delias aruna* ♀ upperside (Lepidoptera: Pieridae: Pierinae)
- O: *Delias niepelti* ♀ upperside (Lepidoptera: Pieridae: Pierinae)
- P: *Delias clathrata* underside (Lepidoptera: Pieridae: Pierinae)
- Q: *Miyana meyeri* upperside (Lepidoptera: Nymphalidae: Acraeinae)
- R: *Cyrestis acilia* upperside (Lepidoptera: Nymphalidae: Nymphalinae)
- S: *Argyreus hyperbius* upperside (Lepidoptera: Nymphalidae: Nymphalinae)
- T: *Parthenos sylvia* upperside (Lepidoptera: Nymphalidae: Nymphalinae)
- U: *Doleschallia dascylus* upperside (Lepidoptera: Nymphalidae: Nymphalinae)
- V: *Doleschallia hexophthalmos* upperside (Lepidoptera: Nymphalidae: Nymphalinae)
- W: *Hypolimnias bolina* ♀ upperside (Lepidoptera: Nymphalidae: Nymphalinae)
- X: *Hypolimnias alimena* upperside (Lepidoptera: Nymphalidae: Nymphalinae)
- Y: *Cethosia cydippe* upperside (Lepidoptera: Nymphalidae: Nymphalinae)
- Z: *Morphopsis meeki* ♀ upperside (Lepidoptera: Nymphalidae: Morphinae)
- Z1: *Morphopsis meeki* ♂ upperside (Lepidoptera: Nymphalidae: Morphinae)
- Z2: *Taenaris catops* upperside (Lepidoptera: Nymphalidae: Morphinae)

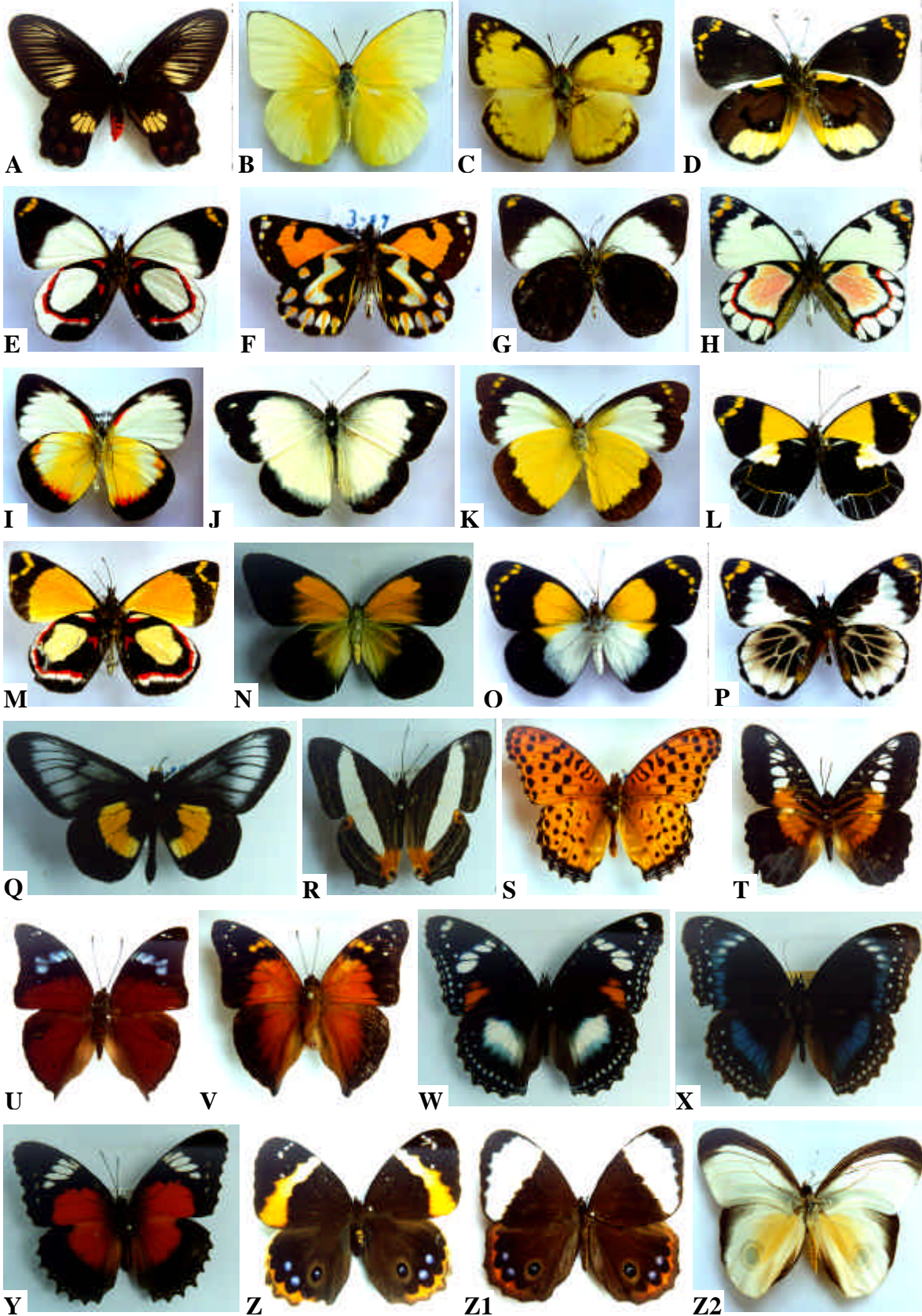


Plate 10

Plate 11
Butterflies IV, Miscellaneous

- A: *Taenaris onolaus* upperside (Lepidoptera: Nymphalidae: Morphinae)
- B: *Danaus chrysippus* ♀ upperside (Lepidoptera: Nymphalidae: Danainae)
- C: *Tirumala hamata* upperside (Lepidoptera: Nymphalidae: Danainae)
- D: *Euploea wallacei* upperside (Lepidoptera: Nymphalidae: Danainae)

- E: *Euploea callithoe* upperside (Lepidoptera: Nymphalidae: Danainae)
- F: *Paranthica weiskei* upperside (Lepidoptera: Nymphalidae: Danainae)
- G: Cortex mining of *Araucaria cunninghamii* (Araucariaceae) branchlets caused by *Hylurdretonus araucariae* (Coleoptera: Scolytidae). The entrance hole of the beetles is indicated with an arrow

- H: Proceeding wilt of 4 year old *Araucaria cunninghamii* (Araucariaceae) due to *Coptotermes elisae* (Isoptera: Rhinotermitidae) attack
- I: Defoliation of *Araucaria cunninghamii* (Araucariaceae) caused by *Hylurdretonus araucariae* (Coleoptera: Scolytidae)

- J: Reforestation area of Stettin Bay Lumber Company (SBLC) near Kimbe, West New Britain Province. The polycultural system consists of narrow strips of Kamarere (*Eucalyptus deglupta*) in the foreground followed by Erima (*Octomeles sumatrana*), Talis (*Terminalia brassii*) and secondary forest in the background
- K: Satellite image of Crooked Creek, East of Bulolo, that can be used for the assessment of termite infestation of Hoop (*Araucaria cunninghamii*) plantations



A



B



C



D



E



F



G



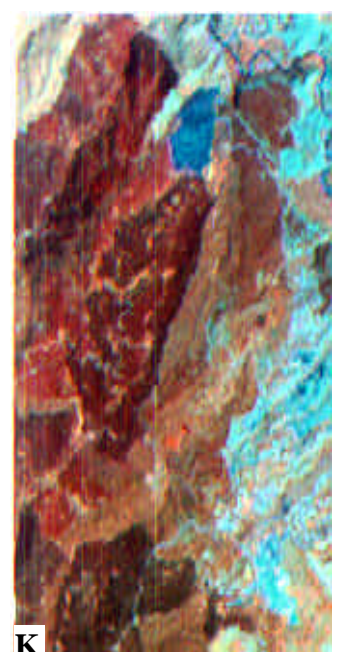
H



I



J



K

Plate 11